

The background of the slide features a soft-focus photograph of several pink flowers on thin green stems. The flowers are in various stages of bloom, with some showing multiple small petals. The overall color palette is muted, with the pink and green tones of the plants set against a dark, almost black background, which makes the white text stand out prominently.

# THE STATUS QUO OF NAMIBIA'S FORESTS

Presented by: Albertina Fillipus

Project-end Conference

20 September 2023



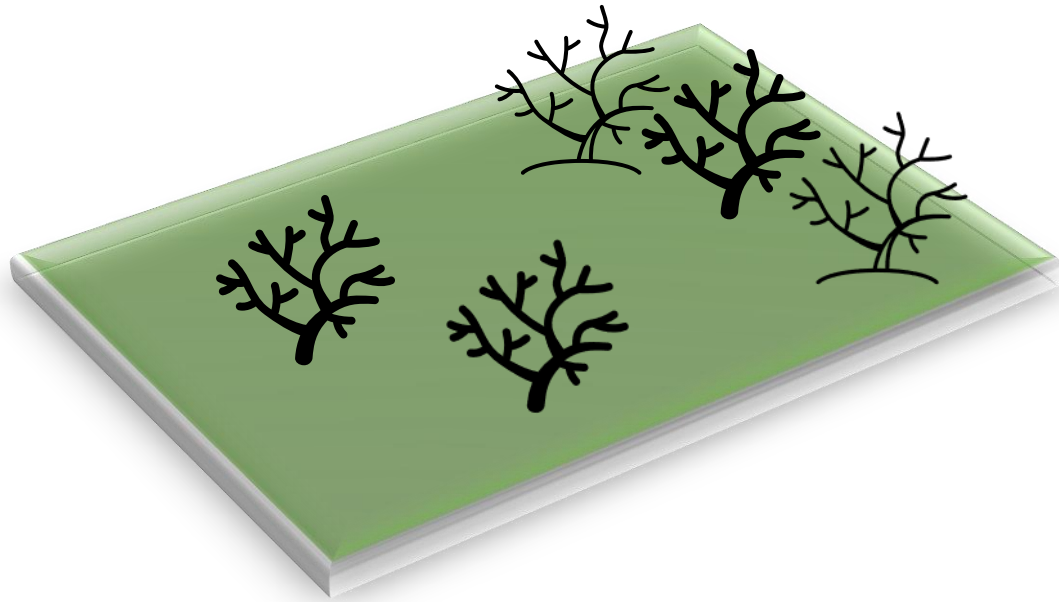
# What is a forest?

- A biological community dominated by trees and other woody vegetation.
- Tree density determined by climate, topography, geology and anthropogenic activities.
- Savannahs, open canopy woodlands and dense forests



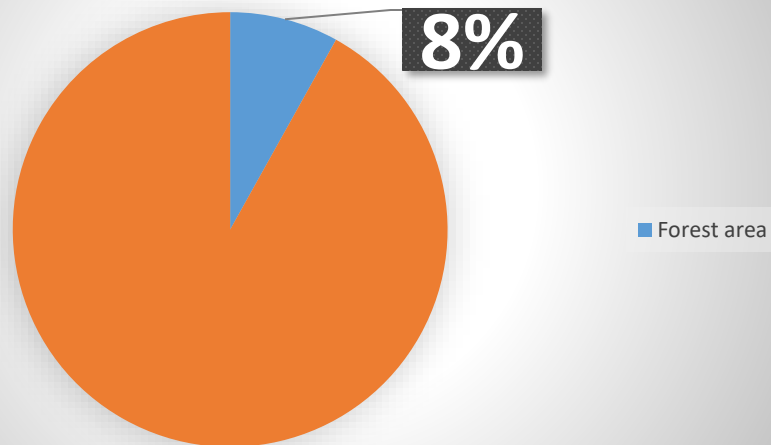
# What is a forest?

Land covering more than **0.5ha** with trees higher than **5m** and a canopy of more than **10%** (FAO, 2020).



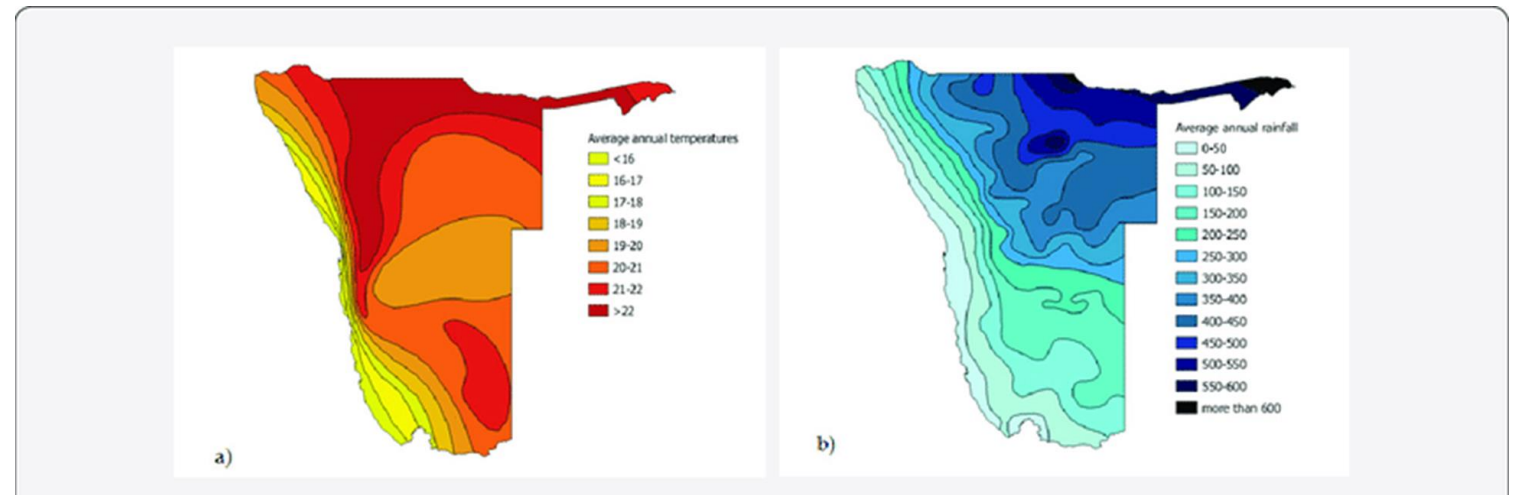
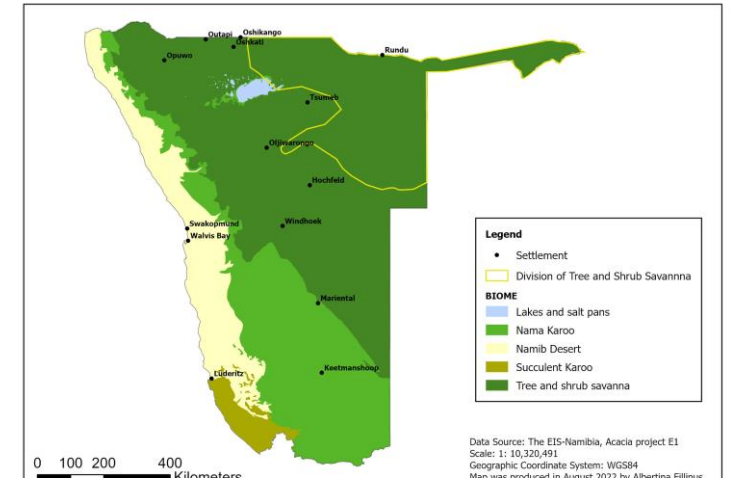
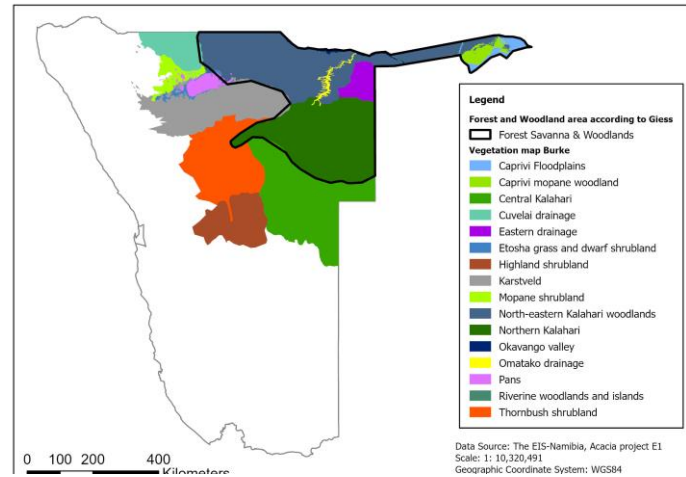
# Facts and figures about our forests?

Namibia's current forest cover



- Covers 8.1 % in 2020,
- Decreased gradually from 9.7% in 2001,
- Reduced by 20% since the independence (FAO, 2020).
- Rural communities' livelihoods (>70% of Namibian depend on NRs)
- Illegal harvesting of wood (plant poaching)

# What do we know about our forests?



# What do we need to know about our forests?

- Namibia is an Arid to Semi-arid country
- Drivers of forest cover change (unsustainable practices)
- Effects of climate change (adaptation and resilience)
- Management of our forestry resources (capacity building and empowerment)
- Forestry's tourism and economic potential (livelihoods diversification)



# The future generations are begging us to:

- Practice sustainability
- Plant more trees







THANK YOU



DO NOT FORGET  
TO PLANT A  
TREE ON YOUR  
BIRTHDAY