

# NAMIBIA'S FORESTS AT A GLANCE

---

Presented by: Albertina Phillipus

National Conference on Sustainable Forest Management

20 July 2022

---

Introduction

**Outline**

---

About Namibia's forests

Take home message



# What is a forest?

- A biological community dominated by trees and other woody vegetation.
- Tree density determined by climate, topography, geology and anthropogenic activities.
- Savannahs, open canopy woodlands and dense forests

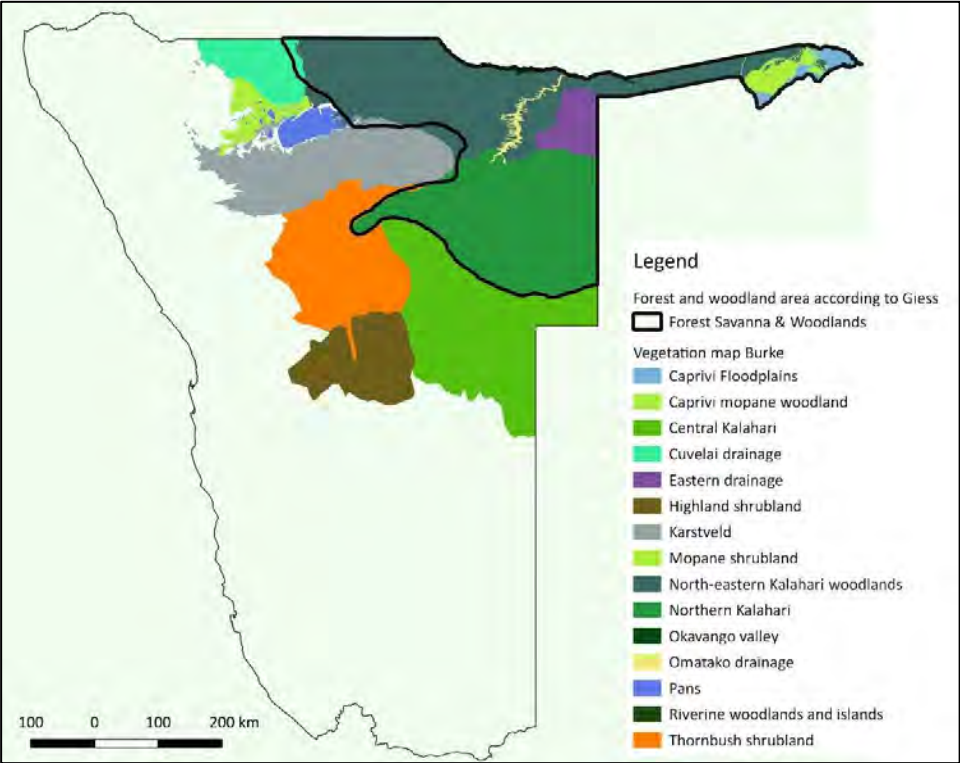
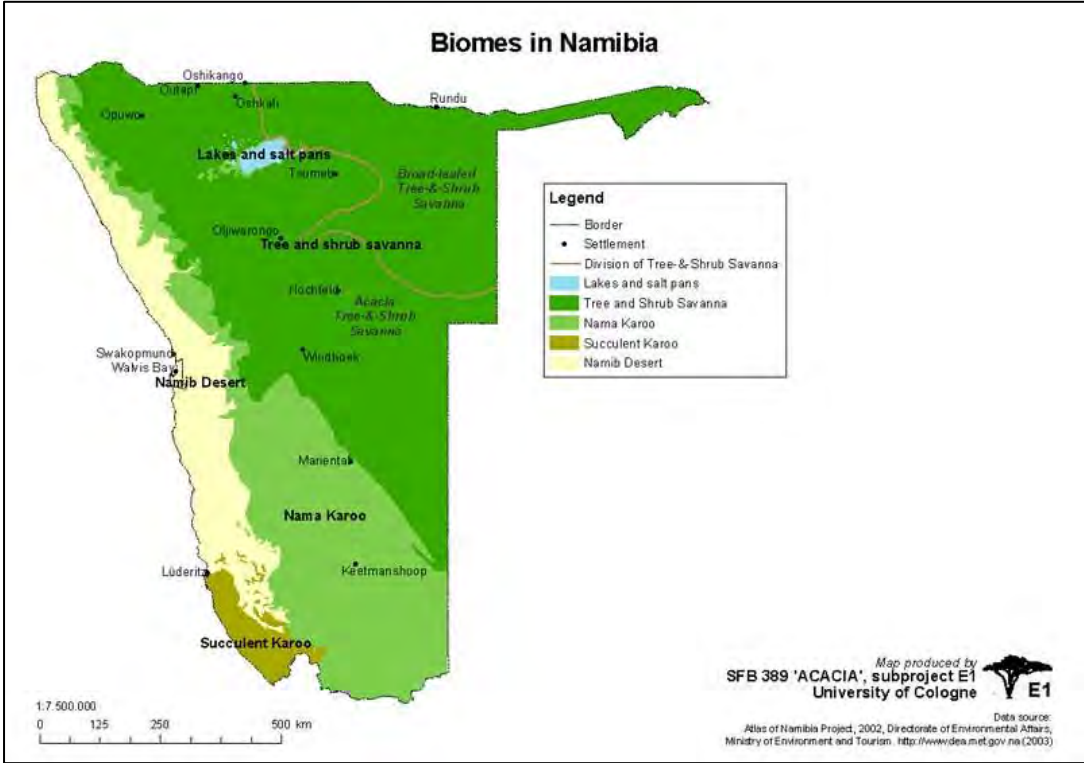




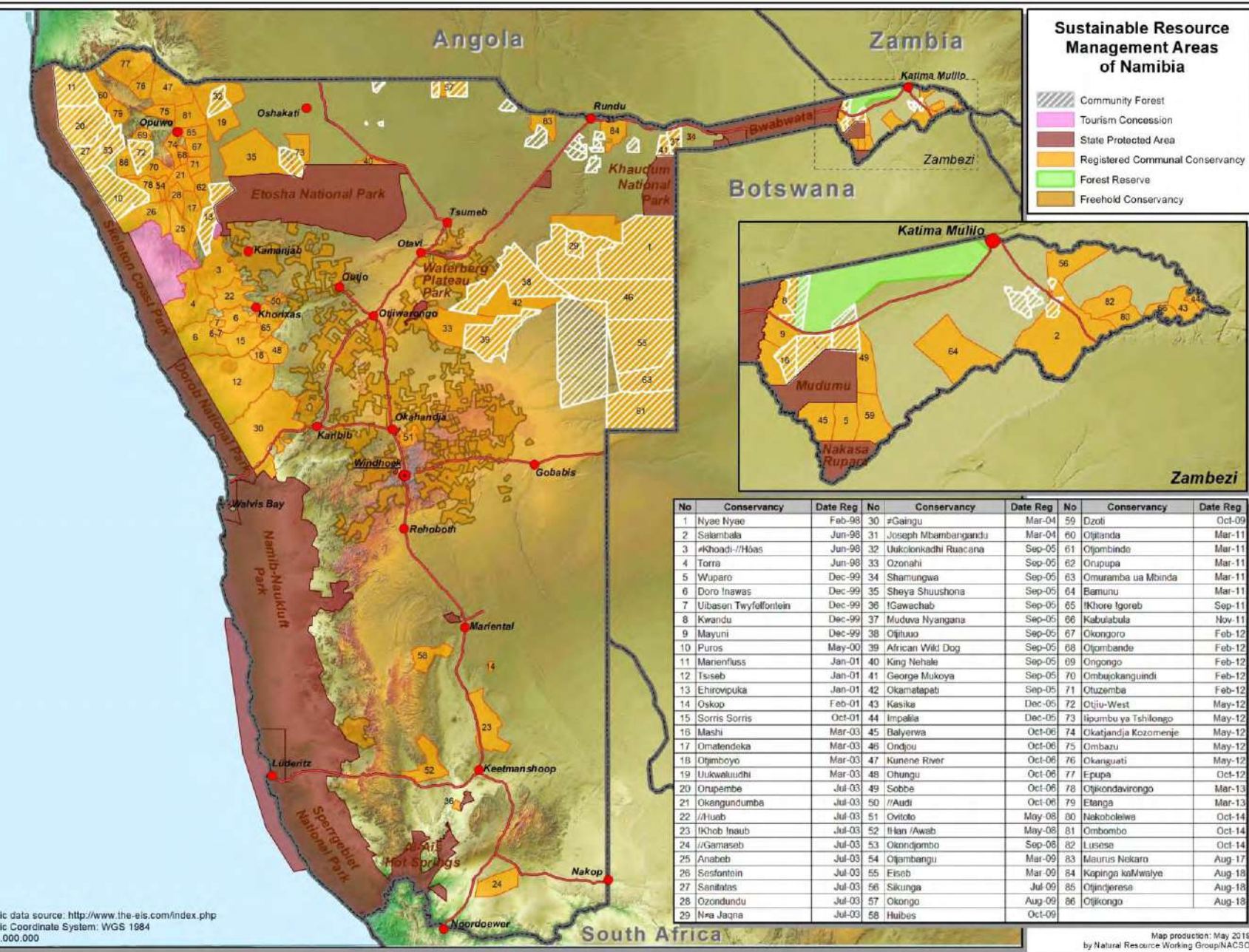
# What do we know about our forests?

- Covers 8.1 % in 2020,
- Decreased gradually from 9.7% in 2001,
- Reduced by 20% since the independence (FAO, 2020).
- Rural communities' dependence on woodlands
- Illegal harvesting of wood (plant poaching)

# What do we know about our forests?







## Protection

- 14 State protected areas (7 fall within the forested areas)
- 86 Communal conservancies
- 43 Community forests
- 1 State forest\*
- Forest Act 2001 (under review)



# What do we need to know about our forests?

---

- Larger perspective
- Drivers of forest cover change
- Effects of climate change
- Management of our forestry resources
- Forestry's tourism and economic potential



# There is HOPE if:

---

- Practice sustainability
- Plant more trees





**2018**



**2021**



It is possible to increase our carbon sink

**THANK  
YOU**



**DO NOT  
FORGET  
TO PLANT  
A TREE  
ON YOUR  
BIRTHDAY**