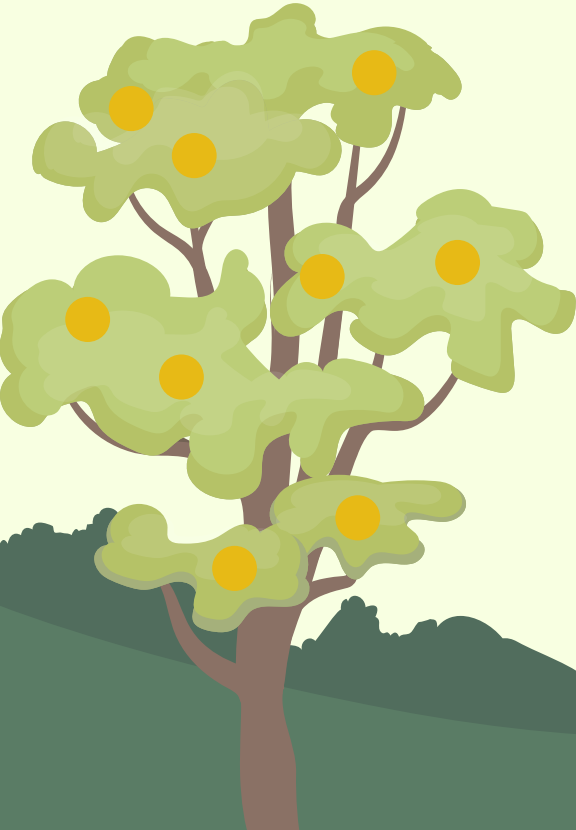


TOWARDS SUSTAINABLE UTILISATION OF FOREST PRODUCTS IN NAMIBIA'S COMMUNAL AREAS



By Kamuhelo Lisao
Chief Forester: Central Forest Regions
Directorate of Forestry
Ministry of Environment, Forestry and Tourism
Email: Kamuhelo.lisao@meft.gov.na

20 September 2023



REPUBLIC OF NAMIBIA

OUTLINE

- **Introduction**
- **Value of forests**
- **Community-Based Forest Management Initiatives**
- **Impacts of Forest Product Utilization**
- **Challenges and Constraints**
- **Opportunities and Future Prospects**
- **Conclusion**

FORESTRY DEPENDANCY AND POVERTY ERADICATION



Forest resource use

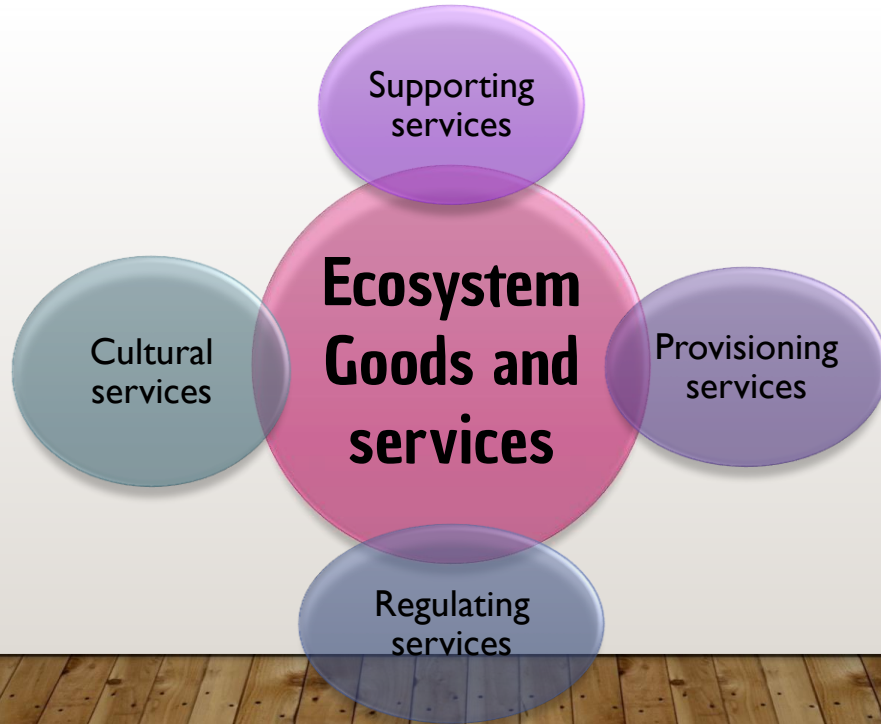


Namibia has diverse ecosystems

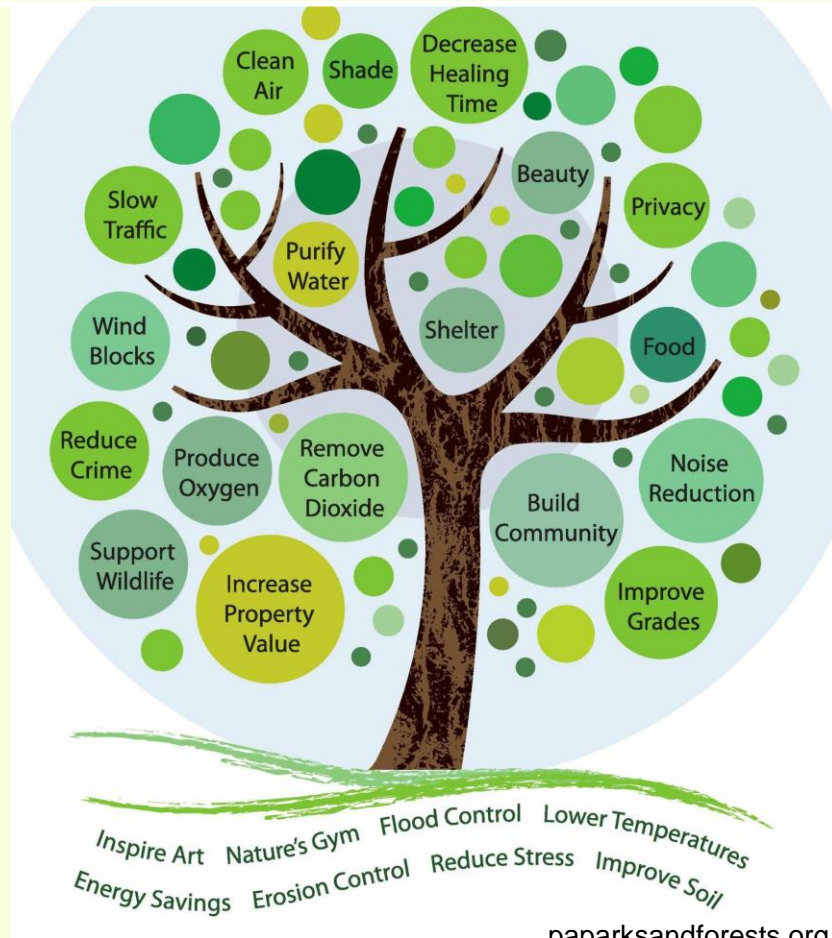


Forests in Namibia's communal areas play a vital role in supporting livelihoods, biodiversity conservation, and climate regulation

ECOSYSTEM SERVICES



The Value of Forests



USER RIGHTS AND SUSTAINABLE FOREST UTILISATION



Classified



Unclassified

PART 5; 24. (1) Forests and forest produce shall, in Namibia, subject to the permission of the owner of the land or the management authority of a classified forest and to the terms of a licence issued under this Act, be used in accordance with an applicable management plan.

PERMISSION OF USE

	POLES	FIREWOOD	AUTHORISATION	MANAGEMENT
UNCLASSIFIED FOREST			TRADITIONAL AUTHORITY	TRADITIONAL AUTHORITY, FORESTRY
CLASSIFIED FOREST			FOREST MANAGEMENT COMMITTEE	FOREST MANAGEMENT COMMITTEE, FORESTRY

LEGAL PROVISIONS OF USE

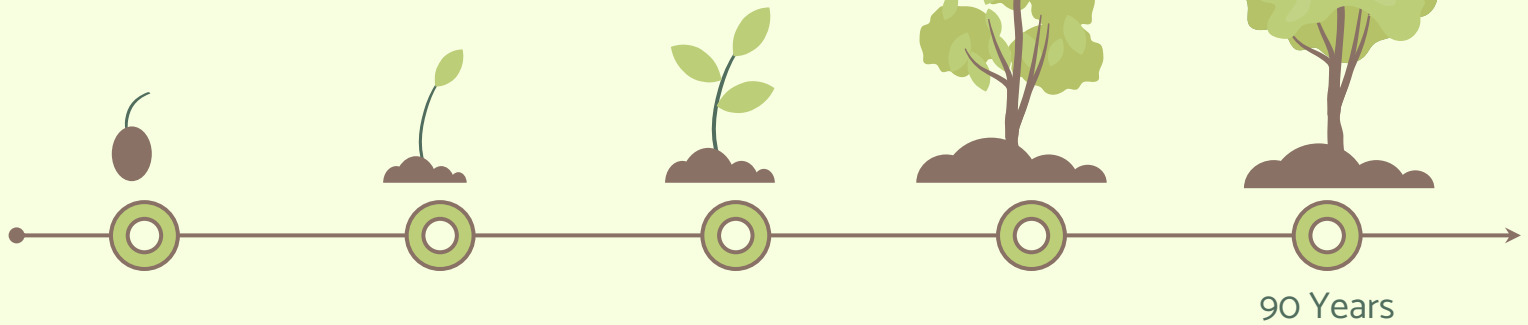
	POLES, DROPPERS	FIREWOOD	CHARCOAL	NON-TIMBER FOREST PRODUCTS
UNCLASSIFIED FOREST	 <i>Not for commercial use</i>	 <i>Not for commercial use</i>	X	
COMMUNITY FOREST			X	

COMMUNITY BASED APPROACH

- **Maximizing sustainable resource** management in communal areas in Namibia requires a holistic approach that considers the socio-economic, cultural, and environmental aspects. By promoting **responsible utilization of forest products**, ensure long-term benefits for both present and future generations.
- Enables communities who have a direct stake in forest resources to be part of **decision-making** in all aspects of forest management, from managing resources to formulating and implementing institutional frameworks



TIMBER PRODUCTION AND UTILISATION



COMMON TIMBER SPECIES IN NAMIBIA



Zambezi Teak (*Baikiaea plurijuga*):

Maturity: 80-120 years
valuable hardwood species used in flooring, decking, and furniture.



Mukwa (*Pterocarpus angolensis*)

Maturity: 60-100 years
It is used for furniture, flooring, and paneling due to its beautiful reddish-brown color and durability.



False mopane (*Guibourtia coleospermum*)

Maturity: 80-120 years
It takes several decades to mature, making sustainable harvesting essential.



Mopane (*Colophospermum mopane*)

Maturity: up to 100 years
Multi-purpose tree, It takes several decades to mature, making sustainable harvesting essential.



CBNRM BENEFITS RURAL COMMUNITIES

Income generated
(2021-2023): N\$
970 319.00

Projects

Muduva (Kavango East Region)

Shamayembe Primary School

M'kata (Otjozondjupa Region)

Solar system

Kwandu (Zambezi Region)

Transformers, contributed to construction to traditional courts (Khutas)

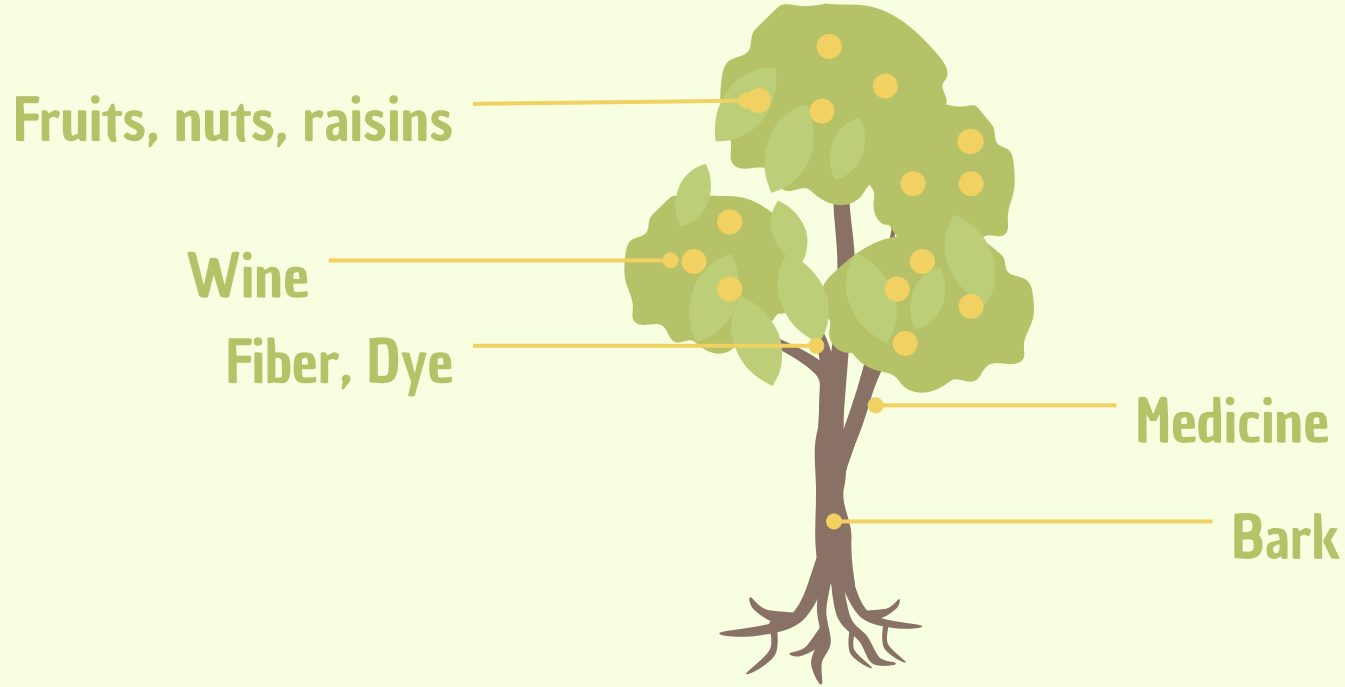
Okongo (Ohangwena Region)

Kindergarden chairs and table, Stationary for school, water points, school classrooms
Shadipamba, Chairs for church, senior citizen shelter for pensioners,



Fire breaks, funeral schemes, student fees, electricity, AGM

UNDER UTILISED PLANT RESOURCES



HAVE YOU TASTED THESE NAMIBIAN GOODIES ?



HAVE YOU TASTED THESE NAMIBIAN GOODIES ?



HAVE YOU TASTED THESE NAMIBIAN GOODIES ?



HAVE YOU TASTED THESE NAMIBIAN GOODIES ?



HAVE YOU TASTED THESE NAMIBIAN GOODIES ?



CHALLENGES

- **Illegal harvesting, unsustainable harvesting and over exploitation**





...CHALLENGES

- Conflicting land uses
- There is lack of scientific management and conservation of NTFP - research and development
- Lack of processing and storage technology facilities
- Lack of efficient and proper market chain
- Limited data on prioritisation of products according to direct and indirect contribution to social economic development
- User rights in different land tenure



...CHALLENGES



- Limited awareness and understanding of consequences of sustainable forest management (Environmental degradation)
- Lack of capacity and resources for implementing sustainable forest techniques

FUTURE PROSPECTS

Legal Framework

Strengthening forest regulations and implementing sustainable forest management practices, develop enabling policies to support utilisation

Value addition and market development

Engaging local communities in sustainable forest management can help combat illegal and unsustainable production.

Non-Timber Forest Products (NTFPs) and Medicinal Plants

Creating a demand for sustainably produced products



FUTURE PROSPECTS



Eco-Tourism



Research and Development



Promote vocational training on forest products as income generation activity



FUTURE PROSPECTS



Community based enterprises for responsible utilisation of forest products



Monitoring sustainable utilisation



Establish special programme for women involvement



FUTURE PROSPECTS



Development of commercial farming of NTFP



Awareness and education



Increased micro-credit financing mechanisms and training



THE SUSTAINABLE FORESTRY SECTOR THAT WE WANT IS IN YOUR HANDS!



Preservation of biodiversity and ecosystem services



Enhanced livelihood and income generation for local communities



Climate change mitigation and through carbon sequestration



Tourism opportunities linked to sustainable forest management

CONCLUSION

- Promoting sustainable forest utilisation in Namibia's communal areas is crucial for environmental conservation, community development and long-term sustainability.
- Adopting responsible practices will ensure preservation of forests for the future generation.

