



Concept of Sustainability in Forests

Lorenz Freiherr Klein von Wisenberg
Windoek
20.07.2022

Agenda

Introduction

Legacy of Family Forest

Origin of Sustainability

Sustainability in Forest

Multifunctionality of Forests

Sustainable Forest Management

SFM and Forest Policy

SFM and People

Correlation and Causalities

Core messages

Who is speaking to you

Education

- Master of Forestry
- publicly sworn and appointed forest expert

Occupation

- managing family forest land
- working as consultant and expert on forestry and environmental issues

Engagement in forest policy

- International Forestry Family Alliance IFFA (MoB)
- Bavarian Forest Landowner Association (MoB),
- German Agricultural Society Forestry Committee DLG;
- German Forestry Council DFWR;
- Society of German Forest Experts BvFF;
- FAO Advisory committee on sustainable based forest industries ACSFI to CoFo;
- USA Forest Landowner Association;

Legacy of Family Forestry

293 years in family hands (1729)

- generating revenue for sustaining livelihood
- family hunting ground
- family retreat area

Contract for future generations

inherit land in order

- to possess and hold it as a trustee,
- to manage it wisely
- and give it in a better condition to the generations to come than you received it

Sustainability 1713



Hans Carl von Carlowitz (Saxony/Germany) created term „sustainable use“

- scarcity of lumber materials for mining
- published 1713 a book „**sy**lvicultura **oeconomica**“
- forestry - cradle of sustainability

Wird der-
halb die größte Kunst, Wissenschaft, Fleiß,
und Einrichtung hiesiger Lande darinnen be-
ruhen, wie eine sothane Conservation und
Anbau des Holzes anzustellen, daß es eine
continuirliche beständige und **nachhaltende**
Nutzung gebe, weiln es eine unentbehrliche Sa-
che ist, ohnewelche das Land in seinem Esse nicht
bleiben mag.

Bundtland report 1987 – „our common future“-
in public discussion as sustainable development

Conference in **Rio Conference 1992** further
defined sustainability based on 3 pillars:

- economical
- environmental
- societal

Sustainability 1619

Family von Alvensleben (Brandenburg/Germany)



exploitation of forest

- scarcity of acorns for feeding pigs in forest
- scarcity of fire wood for an increasing family
- designed 1619 – „**regulation of landuse**“

goal for sustainable land use

- restoration of degraded forest
- by introducing resprouting system
- by natural regeneration system
- regulation of land use
- by control mechanism of use (volume/size)
- by control mechanism of grazing timescale
- by theft and corruption prevention

Sustainability in Forest

How can the 3 pillars of sustainability be secured?

by permanent availability of multifunctionality of forests

by sustainable forest management

important considerations

- balanced to given natural land resources
- no pillar of sustainability should be maximized

but

„financial revenue must be sufficient“

to

maintain environmental and societal functions

Multifunctionality of Forests

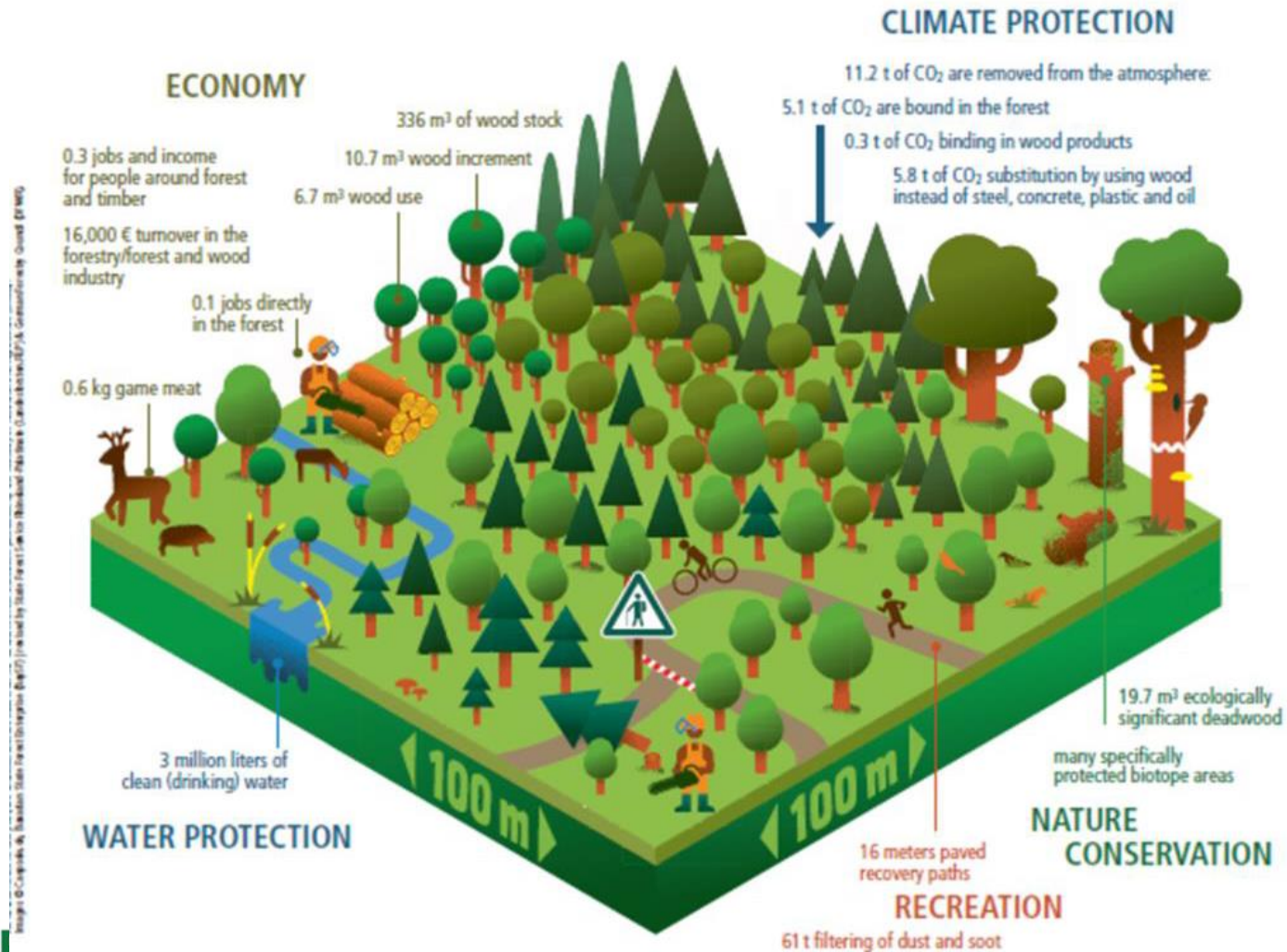


Image: © Capstick & Associates, 2014. Forest Multifunctionality: A Guide to the Multifunctional Forest. (London: Capstick & Associates, 2014). Created by GEMO

Sustainable Forest Management SFM

Core prerequisites for a viable sustainability in forest are

1. Knowledge about and Understanding of SFM

- What stands behind SFM?
- Why is SFM so important?
- How does SFM work?
- What guidelines does SFM require?
- How can SFM be implemented, measured and further be developed?
- How can SFM be promoted?
- How can SFM be conveyed to future generations?

2. Political Environment

- In what political environment should SFM be embedded?

SFM and Forest Policy

SFM should be embedded in an economically friendly environment of forest policy:

- secured tenure and ownership rights
- free decision making processes within existing future orientated and sound legislations/regulations
- guaranteed free access to markets
- enabling and supporting of locally controlled forestry
- right to establish forest producer organisations

trust in a reliable forest policy

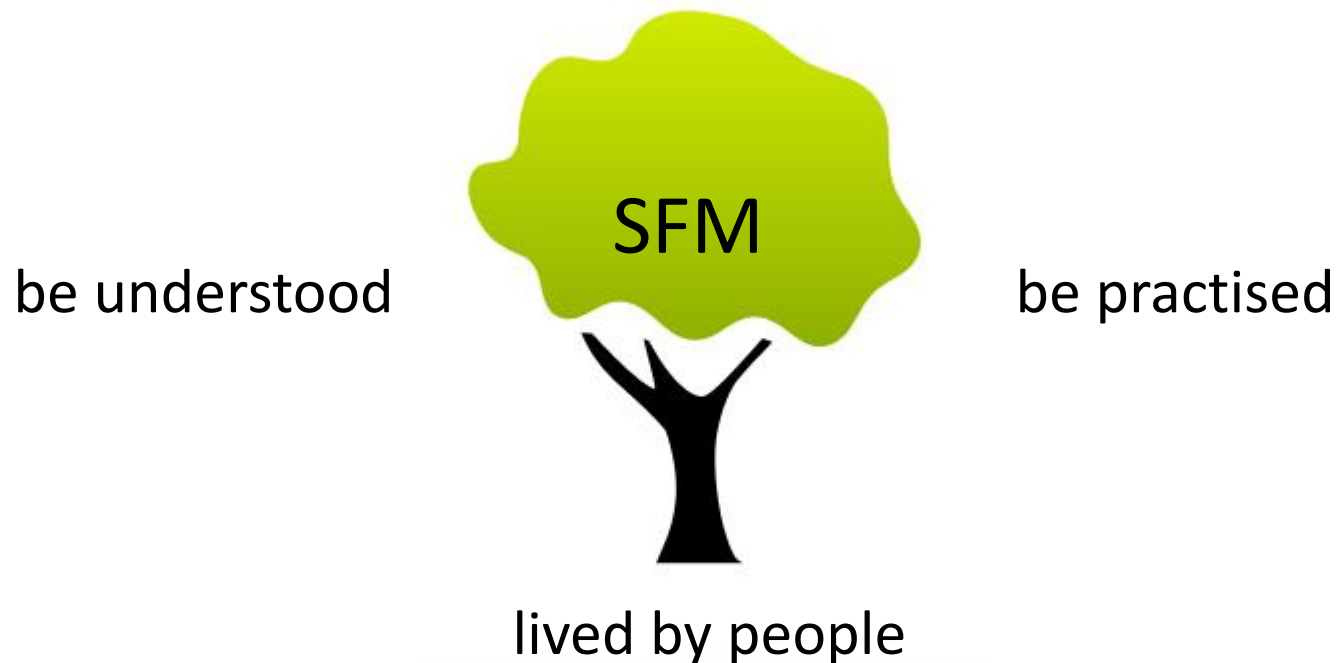
SFM and Forest Policy

SFM should be built on a steering forest policy:

- definition of clear political vision and mission
- implementing sustainable balanced legislations
- operating an efficient forest administration
- support of stakeholder by
 - goal orientated directives
 - incentivising goals by financial subsidies
 - afforestation
 - reforestation
 - forestry actions
 - offering technical education and advise

SFM and People

When we talk about SFM we also talk about people



**People are an important asset for SFM
locally controlled forest management**

SFM and People

1. Identification with land and its benefiting character

- realization of land value as asset
- realization of land as sustaining livelihood
- realization of land as eradicating poverty
- realization of land as providing multifunctionality

1.Key for unlocking SFM

SFM and People

2. Motivation by SFM

- management efforts shall be rewarded by success
 - growth and crop yield
 - fair revenue for all products
- management idea shall be promoted by
 - transferring knowledge and sharing experience
 - supporting “grass root” and “light tower” projects
 - establishing producer organizations as self helping bodies

2. Key for unlocking SFM

SFM and People

3. Innovation for SFM

- management shall be flexible
 - to changing environmental conditions
 - to changing market conditions
 - to changing demands and desires on nature by society
- management measures shall be constantly improved
 - to become more efficient
 - to be more safety for workers
 - to be more protective to environment

Correlations and Causalities



Sustainable Forest Management

Core messages for achieving the full potential of a viable SFM are

- appreciation
- responsibility
- pride
- trust

in order to protect nature, support eradicating poverty and sustaining livelihood and create perspectives for population in rural areas

A photograph of three children standing in a dry, open landscape under a clear blue sky. Each child is carrying a large, heavy bundle of sticks and branches balanced on their head. The child on the left is wearing a red t-shirt with a cartoon character and blue shorts. The child in the middle is wearing a yellow t-shirt with a heart design and grey shorts. The child on the right is wearing a grey t-shirt with the text 'CITY DOES' and 'KEEP IT COOL' and pink shorts. The ground is dry and dusty, and there are some sparse bushes in the background.

When we talk about
sustainability in forests
than
we also talk about our
future on earth!

Questions ?